



EDITING THE TEST DATA IN A CERTIFICATE A TRAINING GUIDE

After reading this document you should be able to:

- Create an EDIS certificate
- Edit the test data in the boards and circuits

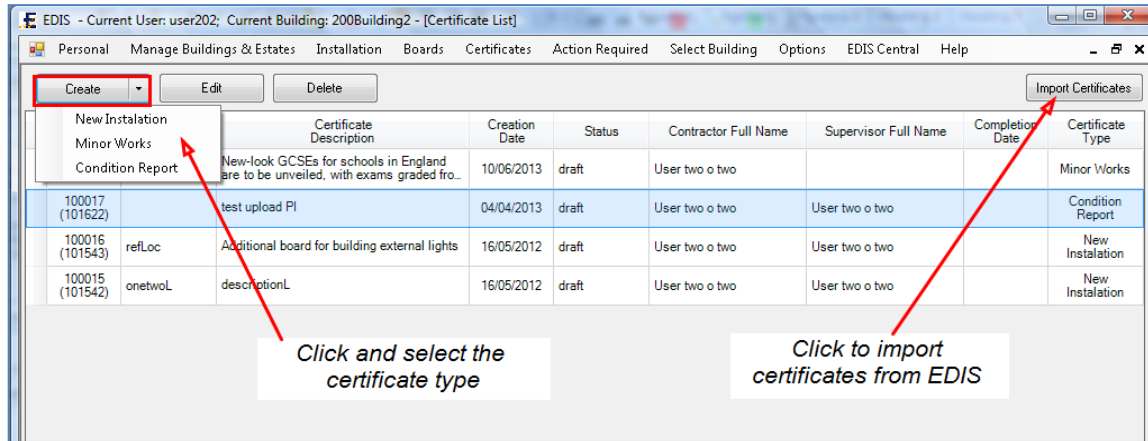
Contents

1. CREATING AND EDITING CERTIFICATES	2
2. CLICK TO CREATE OR ADD A BOARD TO THE CERTIFICATE	2
3. DOUBLE CLICK TO EDIT BOARD	3
4. SELECT SHOW CIRCUITS AND DOUBLE CLICK TO EDIT CIRCUITS	4
5. EDIT CIRCUIT	4

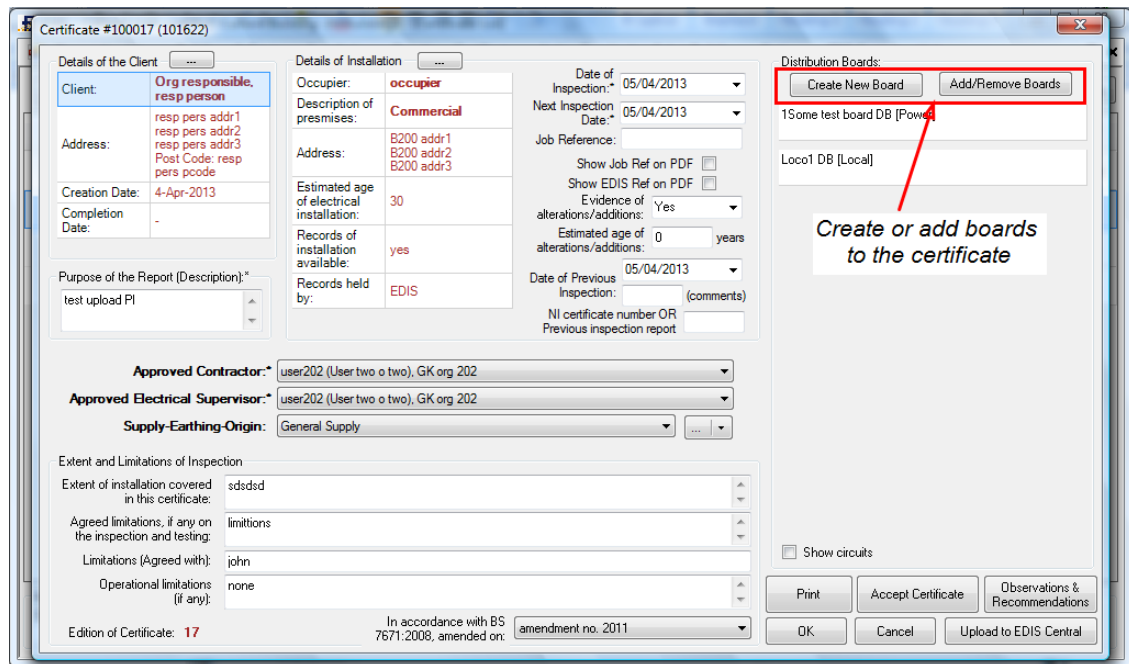
1. CREATING AND EDITING CERTIFICATES

After selecting a building, click on the **Certificates** menu option.

Create a certificate click on **Create** and select a certificate Or click **Import Certificates**



2. CLICK TO CREATE OR ADD A BOARD TO THE CERTIFICATE



3. DOUBLE CLICK TO EDIT BOARD

Certificate #100017 (101622)

Details of the Client

Client: **Org responsible, resp person**

Address: resp pers addr1
resp pers addr2
resp pers addr3
Post Code: resp pers poode

Creation Date: 4-Apr-2013

Completion Date: -

Purpose of the Report (Description):*
test upload PI

Details of Installation

Occupier: **occupier**

Description of premises: **Commercial**

Address: B200 addr1
B200 addr2
B200 addr3

Estimated age of electrical installation: 30

Records of installation available: yes

Records held by: EDIS

Date of Inspection: 05/04/2013

Next Inspection Date: 05/04/2013

Job Reference:

Show Job Ref on PDF

Show EDIS Ref on PDF

Evidence of alterations/additions: Yes

Estimated age of alterations/additions: 0 years

Date of Previous Inspection: 05/04/2013 (comments)

NI certificate number OR Previous inspection report

Distribution Boards:

Create New Board Add/Remove Boards

1Some test board DB [Power]

Loco1 DB (Local)

Double click on edit the

Approved Contractor: user202 (User two o two), GK org 202

Approved Electrical Supervisor: user202 (User two o two), GK org 202

Supply-Earthng-Origin: General Supply

Extent and Limitations of Inspection

Extent of installation covered in this certificate: sdsdsd

Agreed limitations, if any on the inspection and testing: limitations

Limitations (Agreed with): john

Operational limitations (if any): none

Edition of Certificate: 17

In accordance with BS 7671:2008, amended on:

Print Accept Certificate Observations & Recommendations

OK Cancel Upload to EDIS Central

Board Details: 1Some test board DB

TO BE COMPLETED IN EVERY CASE

Location of Distribution Board

Distribution Board Designation: 1Some test board DB

TO BE COMPLETED ONLY IF THE DISTRIBUTION BOARD IS NOT CONNECTED DIRECTLY TO THE ORIGIN OF THE INSTALLATION

Supply to Distribution Board is from: No of Phases: 3 Nominal Voltage: 0 V

Overcurrent Protective device for the distribution circuit: Associated RCD (if any): BS(EN)

Type: BS(EN) Rating: A RCD No of Poles: 0 I_{pn}: 0 mA

ONLY IF THE DISTRIBUTION BOARD IS NOT CONNECTED DIRECTLY TO THE ORIGIN OF THE INSTALLATION

Characteristics at this distribution board

Z_s: 0 Ω Operating times of associated RCD (if any): At I_{Δn}: ms

I_{pf}: 0 kA At 5I_{Δn}: ms (if applicable)

TEST INSTRUMENTS (serial numbers) used:

Earth fault loop impedance: ED

Insulation resistance: Other

Continuity: Other

Circuit Details and Test Results

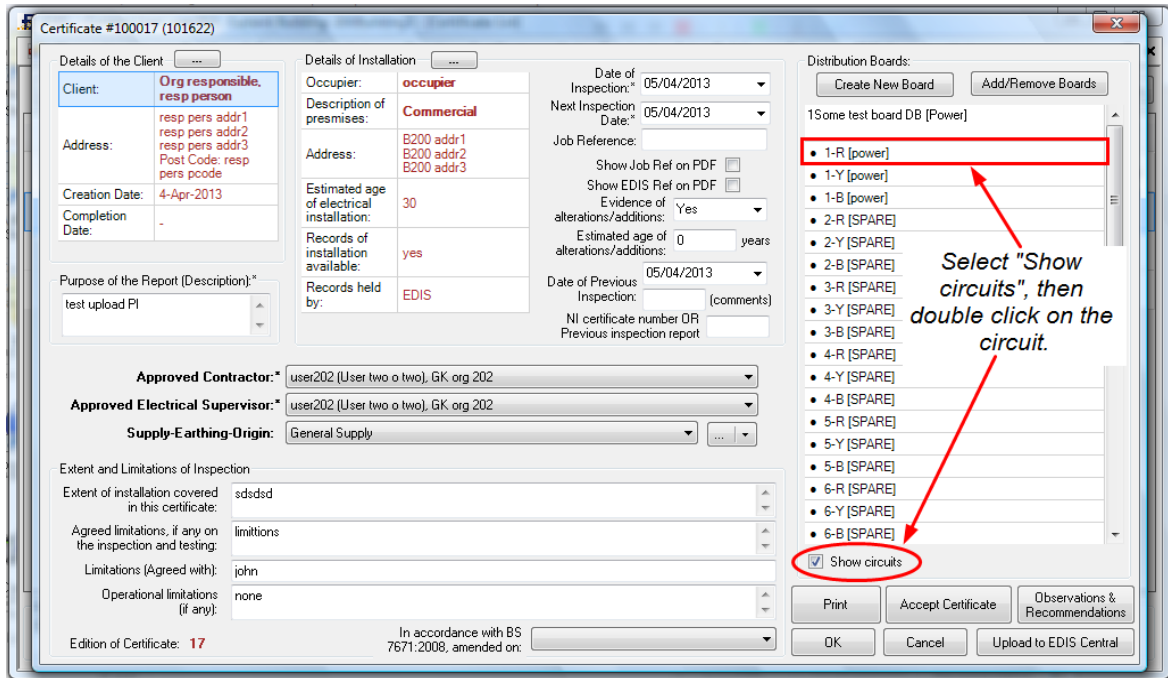
Create Edit Delete

Click to edit board details

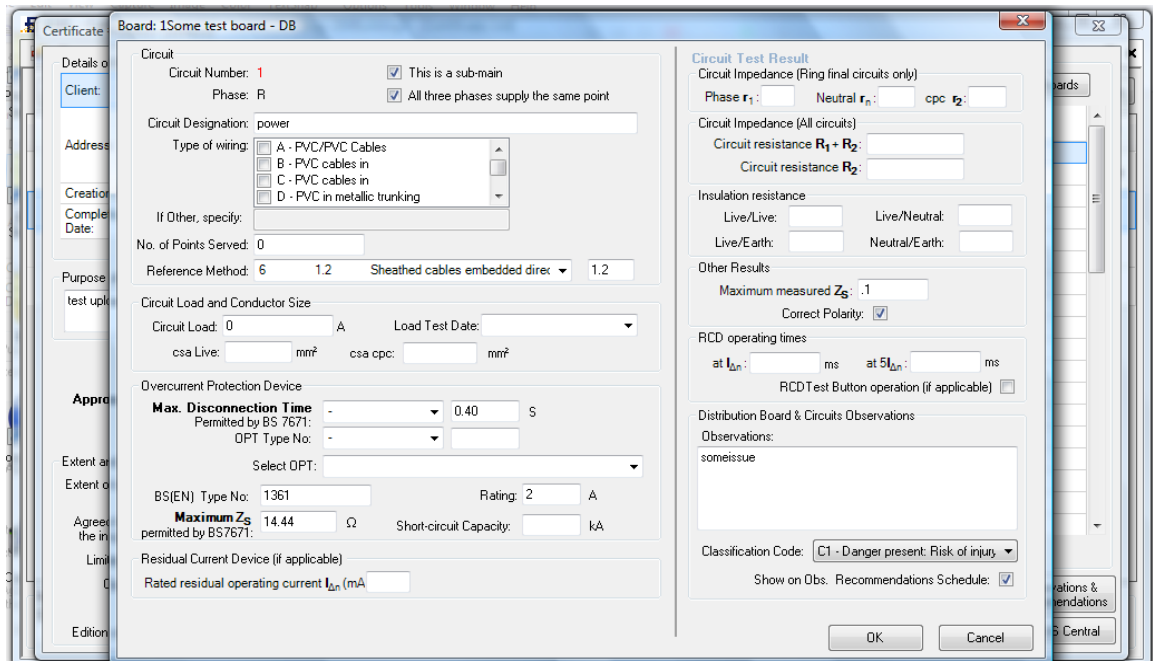
Double click to edit circuit details

Circuit Number and Phase	Circuit Designation	Type of wiring	Reference Method	Number of Points served	Circ		disconnection time permitted by BS 7671 (s)	BS (EN)	Type No	Rating (A)	Short-circuit capacity (kA)	operating current, I _{Δn} (mA)	Maximum Z _s permitted by BS 7671 (Ω)	Ring final circuits only (measured end to end)		
					Live (mm ²)	cpc (mm ²)								r ₁ (Phase)	r _n (Neutral)	r ₂ (cpc)
1-R	power		1.2	0			0.40	1361	2				14.44			
1-Y	power		1.2	0			0.40	1361	2				14.44			
1-B	power		1.2	0			0.40	1361	2				14.44			
2-R	SPARE			0												
2-Y	SPARE			0												
2-B	SPARE			0												
3-R	SPARE			0												

4. SELECT SHOW CIRCUITS AND DOUBLE CLICK TO EDIT CIRCUITS



5. EDIT CIRCUIT



-----END OF DOC